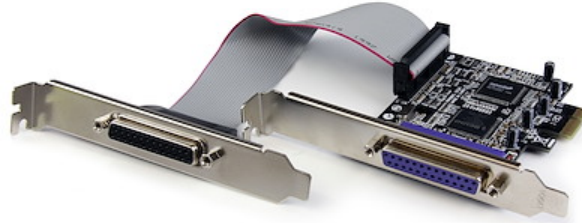


2 Port PCI Express / PCI-e Parallel Adapter Card – IEEE 1284 with Low Profile Bracket

Product ID: PEX2PECP2



The PEX2PECP2 2 Port PCI Express Parallel Adapter Card - EPP/ECP/SPP/PS2 parallel card adds two IEEE 1284 parallel ports to your PC, with support for parallel data communication at speeds of up to 1.5 Mbps.

This high performance 2 Port PCI Express parallel card adds 2 DB25 parallel ports, perfect for connecting printers, scanners, memory card readers, bar code scanners and more. With the added convenience of plug-and-play capability, installing the parallel adapter card is hassle-free. The PCIe Parallel card also includes both standard and half-height/low profile mounting brackets for compatibility with almost any system form factor.

Backed by a StarTech.com Lifetime Warranty and free lifetime technical support.

Certifications, Reports and Compatibility

Applications

- Connects any parallel peripheral including printers, scanners, CD-R/RWs, Zip drives, and memory card readers

Features

- Supports Standard Parallel Port(SPP), Enhanced Parallel Port(EPP), Enhanced Capability Port(ECP) and PS/2
- Data transfer rate up to 1.5 Mbps
- Standard and low-profile brackets included

Hardware

Warranty	Lifetime
Ports	2
Interface	Parallel
Bus Type	PCI Express
Card Type	Standard Profile (LP bracket incl.)
Port Style	Integrated on Card
Chipset ID	ASIX - MCS9865

Performance

Maximum Data Transfer Rate	1.5 Mbps
----------------------------	----------

Connector(s)

Connector Type(s)	PCI Express x1
External Ports	DB-25 (25 pin, D-Sub)

Software

OS Compatibility	Windows 2000, XP, Vista, 7, 8, 8.1, 10, 11 Windows Server 2003, 2008 R2, 2012, 2016, 2019 Linux 3.5.x to 4.11.x <i>LTS Versions only</i>
------------------	--

Environmental

Operating Temperature	0C to 40C (32F to 122F)
Storage Temperature	-20C to 60C (-4F to 140F)
Humidity	5~85% RH, Non-condensing

Physical Characteristics

Color	Black
Material	Steel
Product Length	4.8 in [12.1 cm]
Product Width	0.7 in [19 mm]
Product Height	3.4 in [86 mm]



Weight of Product	1.8 oz [51 g]
-------------------	---------------

Packaging Information

Package Length	6.7 in [16.9 cm]
----------------	------------------

Package Width	5.7 in [14.4 cm]
---------------	------------------

Package Height	1.2 in [30 mm]
----------------	----------------

Shipping (Package) Weight	6.6 oz [188 g]
---------------------------	----------------

What's in the Box

Included in Package	2 Port PCIe Parallel Card
---------------------	---------------------------

	Low Profile Brackets
--	----------------------

	Driver CD
--	-----------

	Instruction Manual
--	--------------------

****Product appearance and specifications are subject to change without notice.***

